

## Cable Replacement Instructions for GDR's Electric Rug Gallery

**Caution:** Care must be taken when performing these procedures as the cable and gear members can cause personal injury in the event of any movement of pieces.

Ensure that the display is not activated using normal lockout procedures and the damaged arm is separated from the others and cannot move up or down during the procedure.

Install a suitably large "C-Clamp" below the trolley bracket to ensure that the trolley cannot move during the procedure.

### Tools Required

- two  $\frac{1}{2}$ " wrenches
- $\frac{1}{8}$ " allen key (supplied with cable kit)
- C-Clamp large enough for 4" opening
- hammer
- extension ladder

## ERG Cable Replacement Instructions

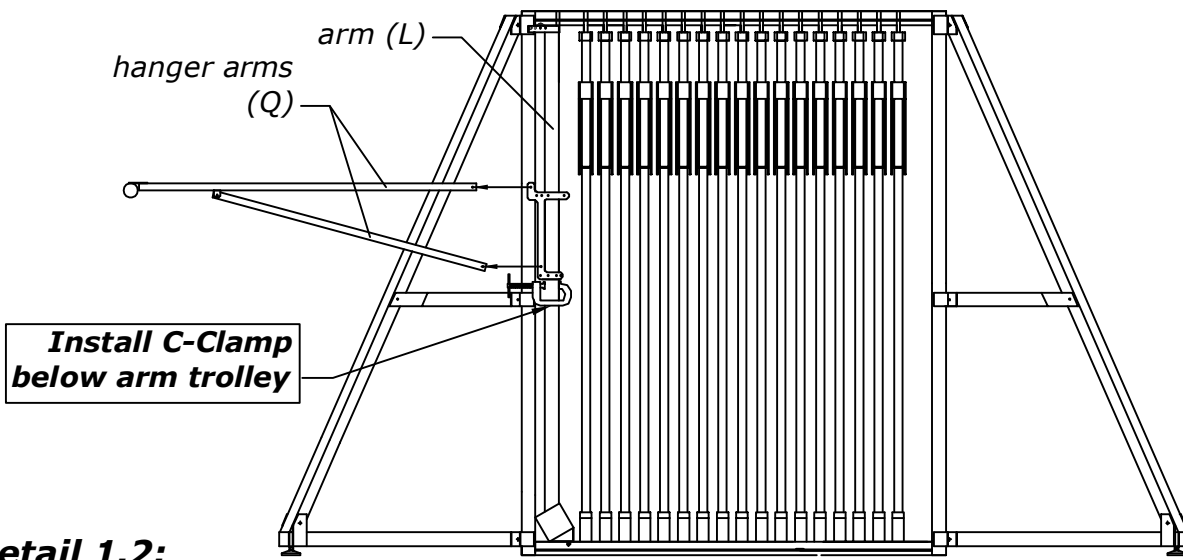
The display arm can cease to function from 2 causes:

- ~ Cable is jammed on the spool in the lower gear box
- ~ Cable has broken and safety brake is engaged

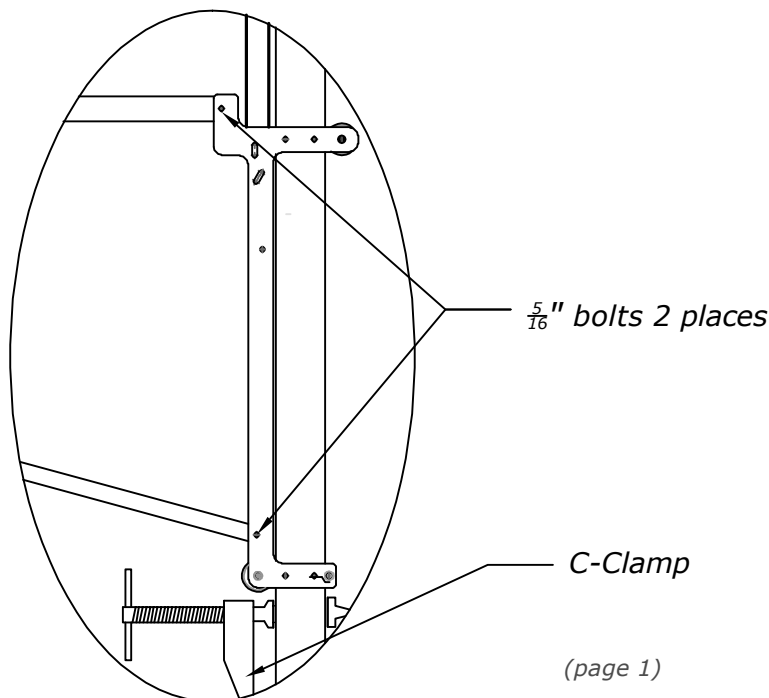
**NOTE:** For safety reasons a large C-Clamp must be installed below the trolley bracket to prevent the arm from moving during repair. The area rugs must be removed from the arm after C-Clamp is securely installed.

- 1.1 Should the arm cease to function in its motion do not keep using the Drill & Extension to try to lower or raise the arm.
- 1.2 After C-Clamp is installed and rugs are removed, remove the two  $\frac{5}{16}$ " bolts on the trolley bracket holding the hanger arm (Q). See detail 2.1.
- 1.3 Proceed to take the (Q) hanger arms off the broken (L) arm by unbolting the two  $\frac{5}{16}$ " bolts, a ladder might be required if hanger arms (Q) are too high. Safety precautions should always be taken when using a ladder.

Front View



**Detail 1.2:**

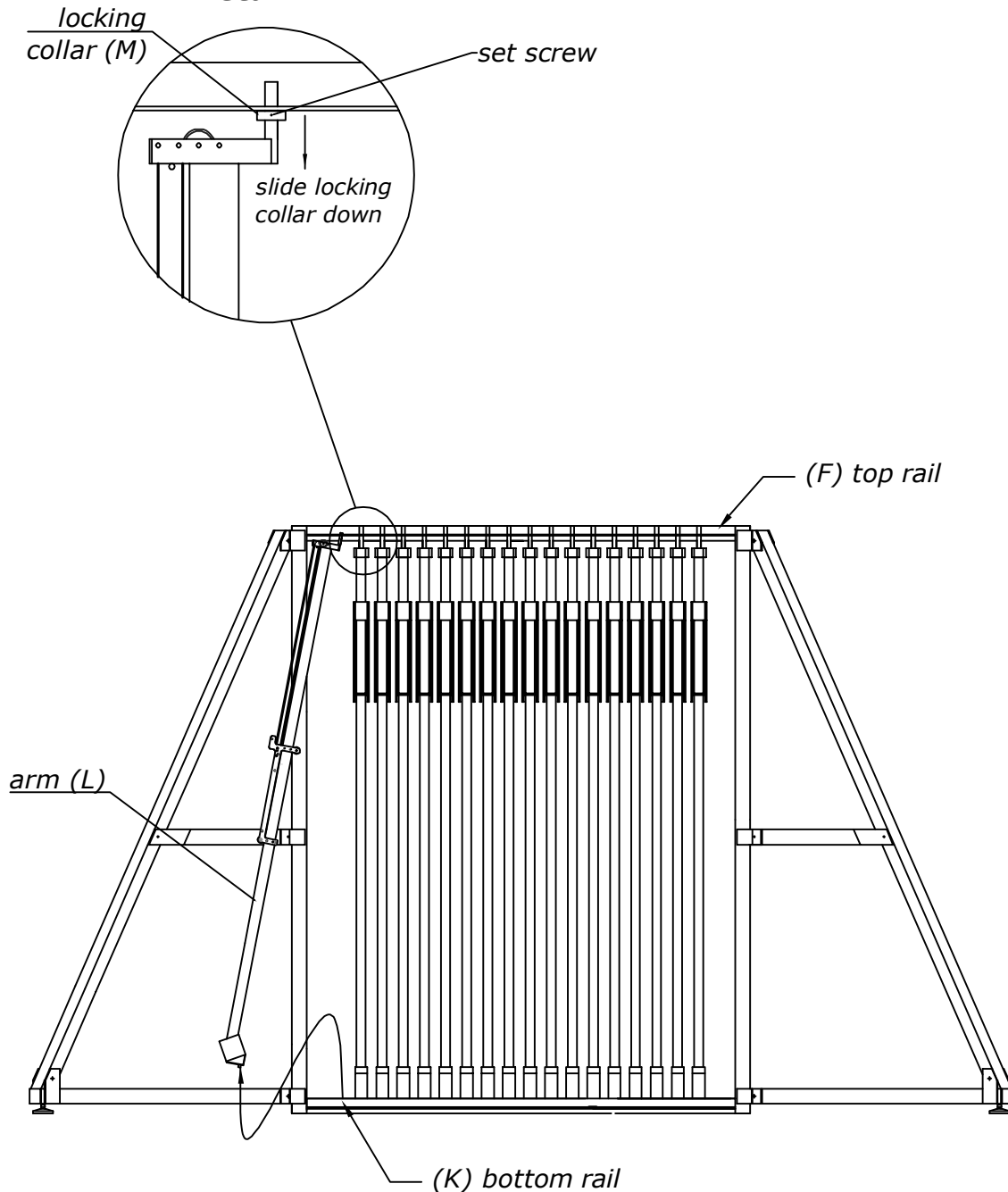


## ERG Cable Replacement Instructions

**NOTE:** These procedures can be performed with the assembly (L) installed in the frame or by removing it. If the repair is going to be made with the assembly installed in the frame then skip to step #3.1.

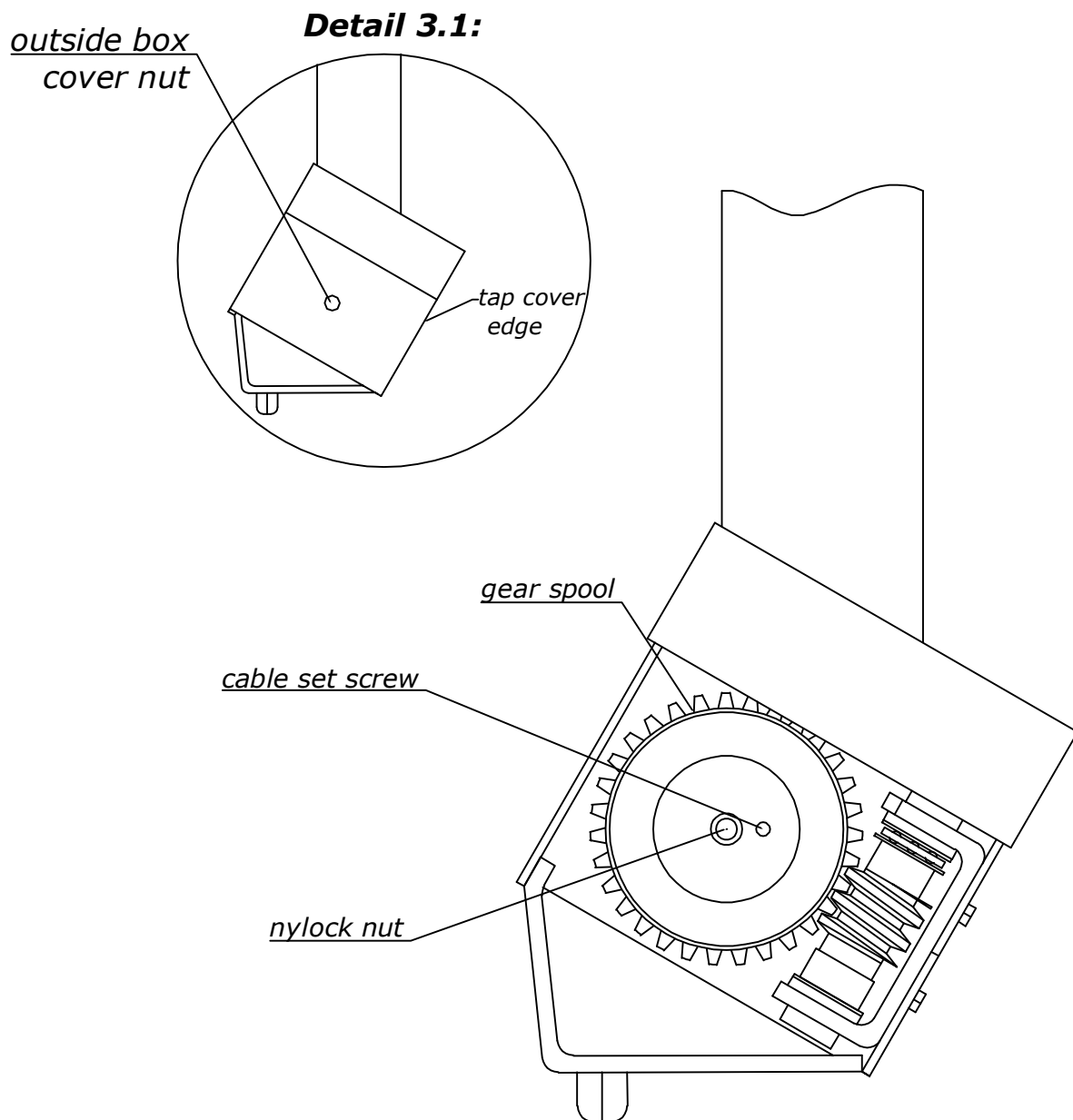
- 2.1 Loosen set screw on the (M) locking collar located at the top of the (L) arm shown in detail 2.1.
- 2.2 Remove (L) arm from display frame to be placed on floor or table where you can work on the cable. To remove (L) arm lift bottom pin out of the (K) bottom rail pull out slightly and continue on to remove the top pin (F) from top rail.

### Detail 2.1:



## ERG Cable Replacement Instructions

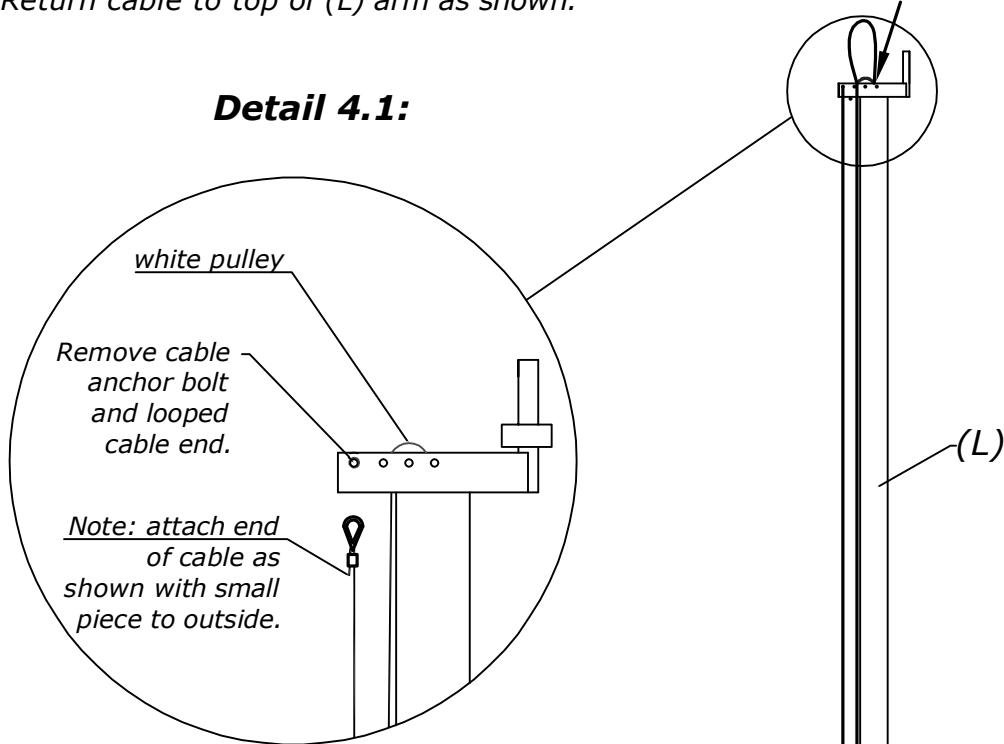
- 3.1 Using a  $\frac{1}{2}$ " wrench remove the nut that holds the outside box cover in place. If the cover is stuck lightly tap with a hammer at specified edge. See detail 3.1.
- 3.2 Once cover is off, remove the  $\frac{5}{16}$ " nylock nut & washer. Two  $\frac{1}{2}$ " wrenches may be required to remove. After nylock nut has been removed push bolt out of gear assembly. The gear spool can now be lifted out of the gear box.
- 3.3 We have provided a  $\frac{1}{8}$ " allen key with the cable replacement kit, locate the cable set screw and loosen it so you can remove the cable end from the spool. Please note the set screw is a small hole and might be covered by grease. it is under the plate washer you removed earlier.



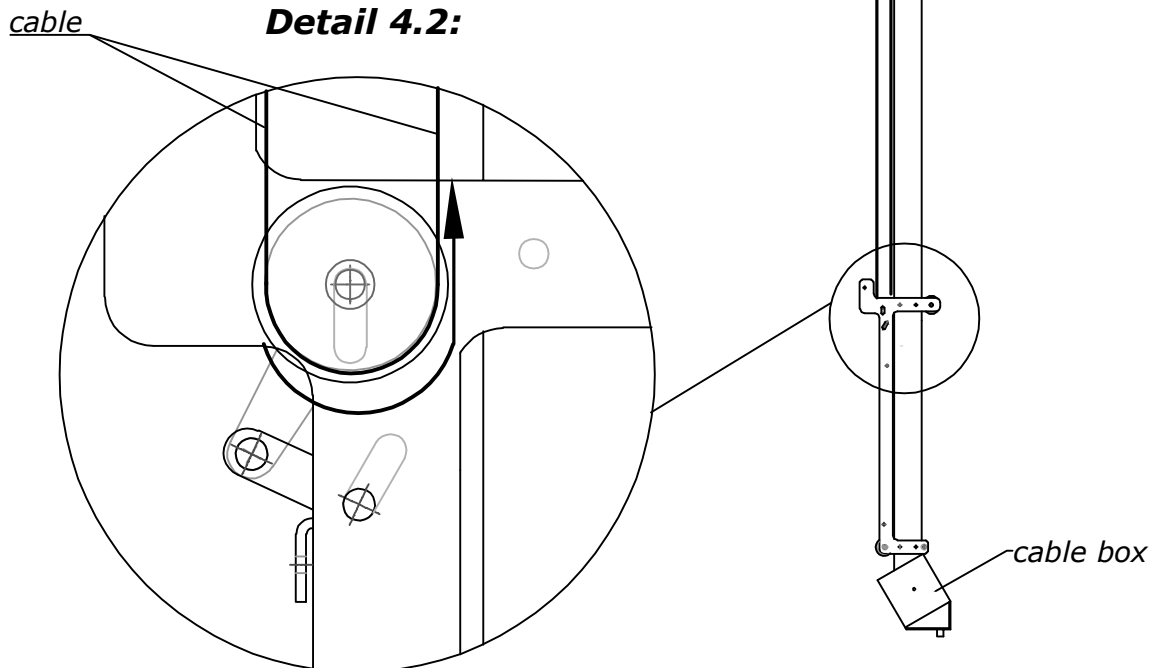
## ERG Cable Replacement Instructions

- 4.1 Remove  $\frac{5}{16}$ " cable anchor bolt located at the top of the (L) arm as shown in detail 4.1. Attach new cable by inserting the cable anchor bolt through the frame spacers and looped end of the wire cable as per original assembly. Re-attach nut to the  $\frac{5}{16}$ " cable anchor bolt. You can always refer to adjacent arm to see how cable was attached and cable spacers center looped end of cable. See detail 4.1, attach cable with short end away from arm (L).
- 4.2 After cable is anchored at the top of the (L) arm, thread the free end of the cable around the outside of the trolley black pulley as shown in detail 4.2. Return cable to top of (L) arm as shown.

### Detail 4.1:



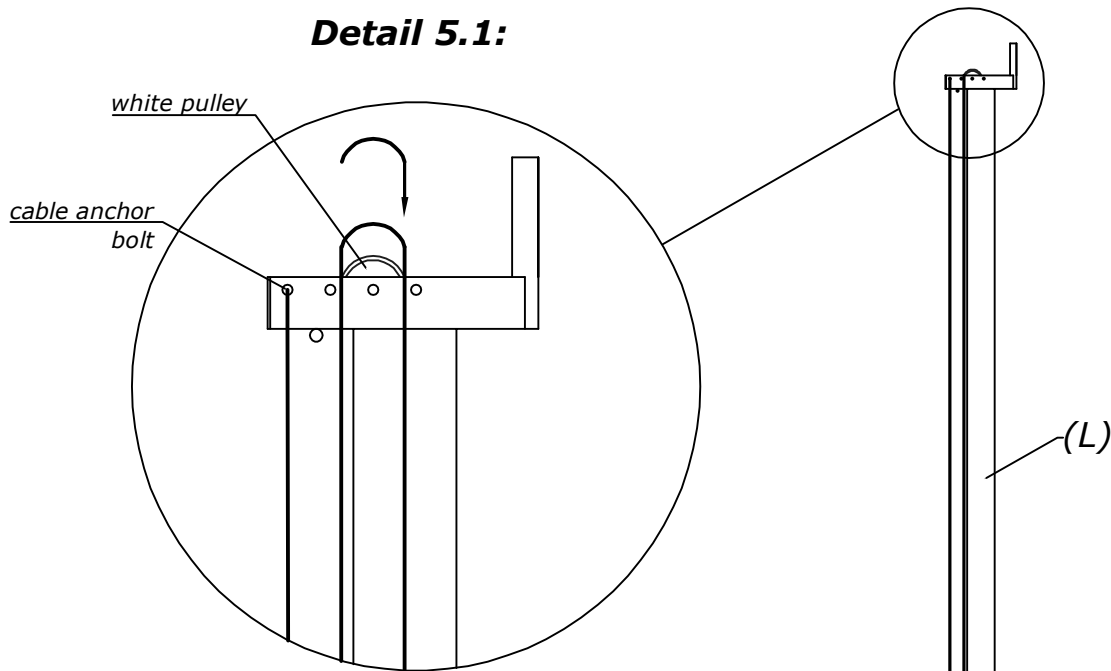
### Detail 4.2:



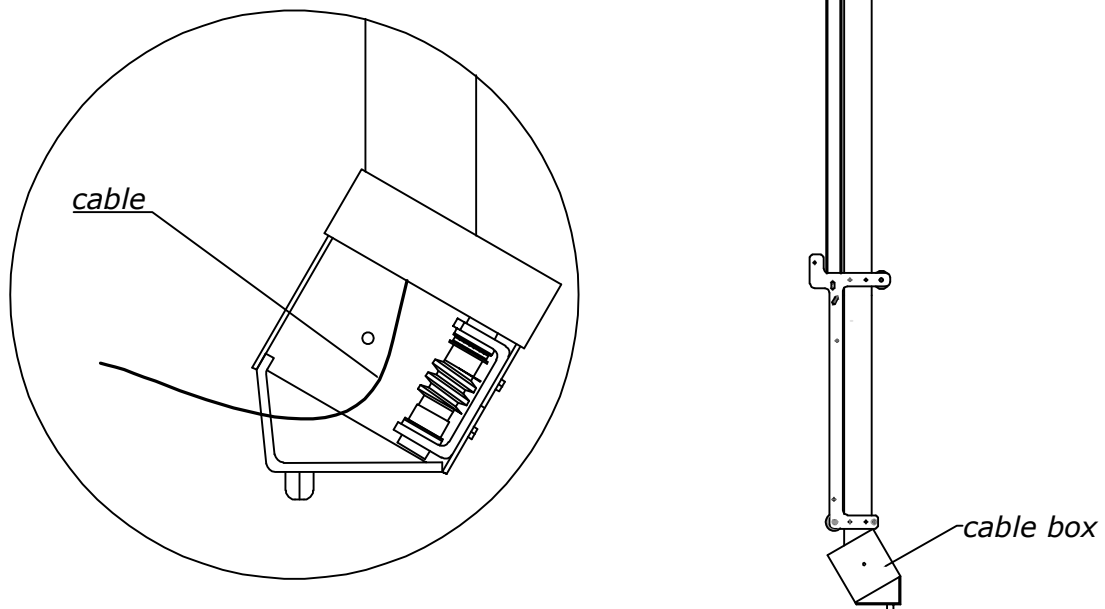
## ERG Cable Replacement Instructions

- 5.1 Insert cable around top white pulley as shown in detail 5.1 and feed cable down through display arm tube "L".
- 5.2 Cable should start to appear at the bottom of the display arm cable box. Pull the cable out at the bottom until all the slack is taken up. Detail 5.2.

### Detail 5.1:

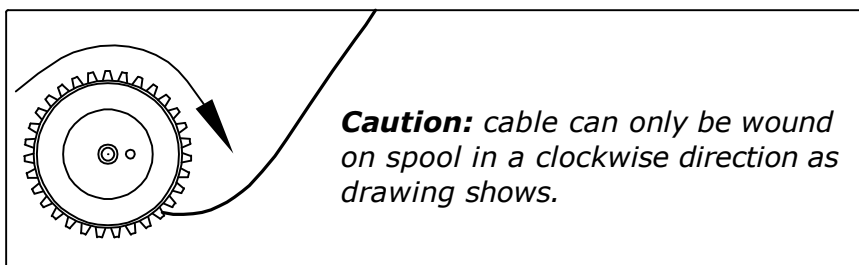


### Detail 5.2:

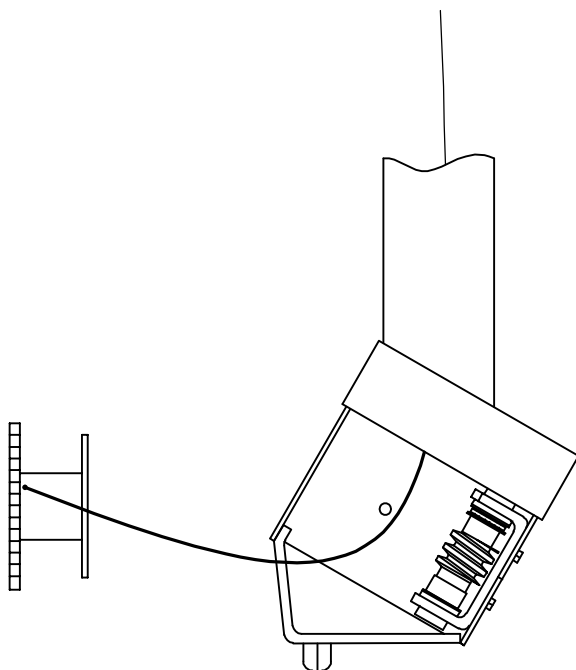


## ERG Cable Replacement Instructions

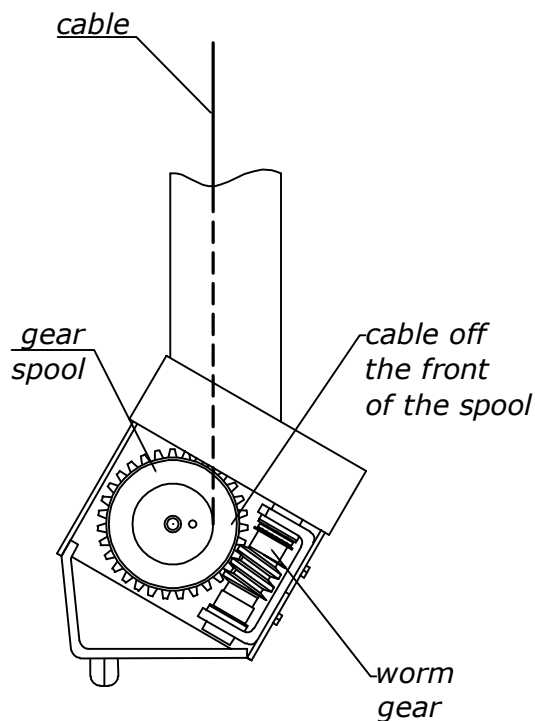
- 6.1 Insert cable into the hole of the Gear Spool, the cable end should protrude approximately  $\frac{3}{4}$ " through the Gear Spool. Make sure the setscrew is tightened to lock the cable onto the spool.
- 6.2 Once the cable is secure, it can be wound onto the Gear Spool in a Clockwise direction (**important**), As the cable is being wound onto Gear Spool the cable will get shorter. When a short length of cable remains place the Gear Spool into the Gear Box engaging the teeth on the Gear Spool with the Worm Gear as shown in detail 6.2. **Caution** - check that the cable is coming off the front of the spool up the center of the tube.
- 6.3 **Important** confirm the cable is coming off the spool on the worm gear side and going up the center of the tube. Detail 6.2.
- 6.4 Replace the bolt and bushing through the Gear Box hole and Gear Spool at this time. Re-attach the washer and  $\frac{1}{2}$ " nylon nut to the bolt. Grease bushing if required.



**Detail 6.1:**



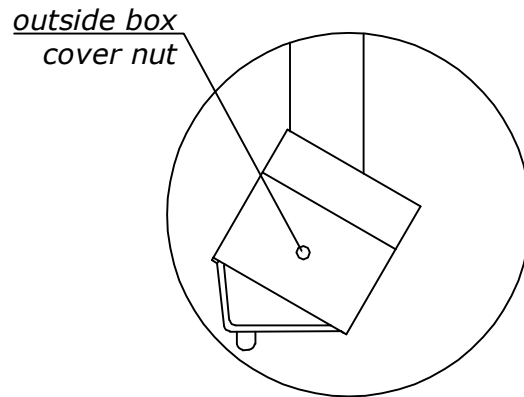
**Detail 6.2:**



## *ERG Cable Replacement Instructions*

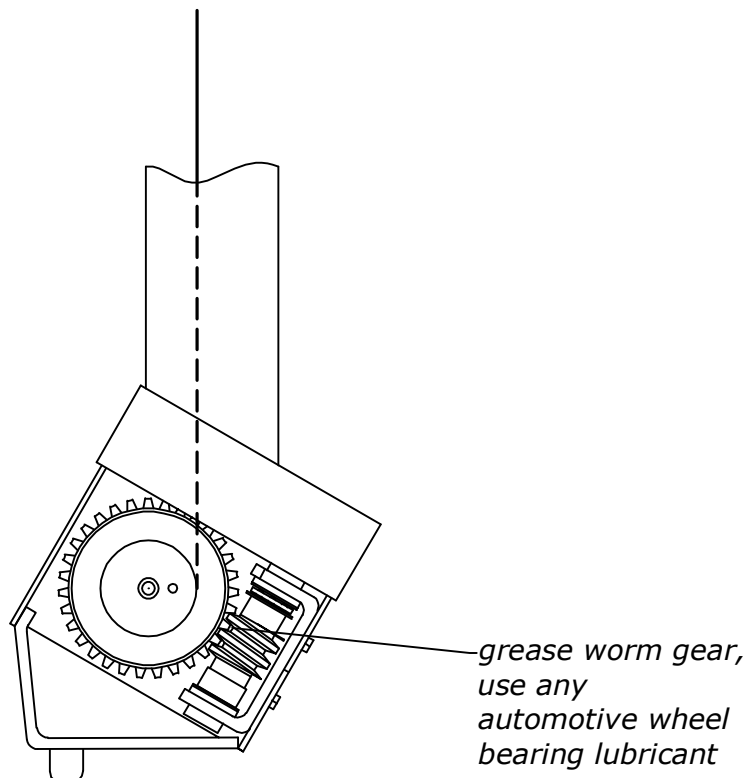
- 7.1 *This is a good time to apply a small amount of grease to the Worm Gear, use automotive wheel bearing lubricant.*
- 7.2 *Check to make sure after the Gear Spool is installed in the Gear Box, the cable wraps onto the Gear Spool on the side closer to the Worm Gear as shown in Detail 7.1.*
- 7.3 *Re attach the Outside Box Cover using the  $\frac{5}{16}$ " nut as shown in Detail 7.2.*

### **Detail 7.2:**



### **Detail 7.1:**

#### *Gear Spool Box Assembly*

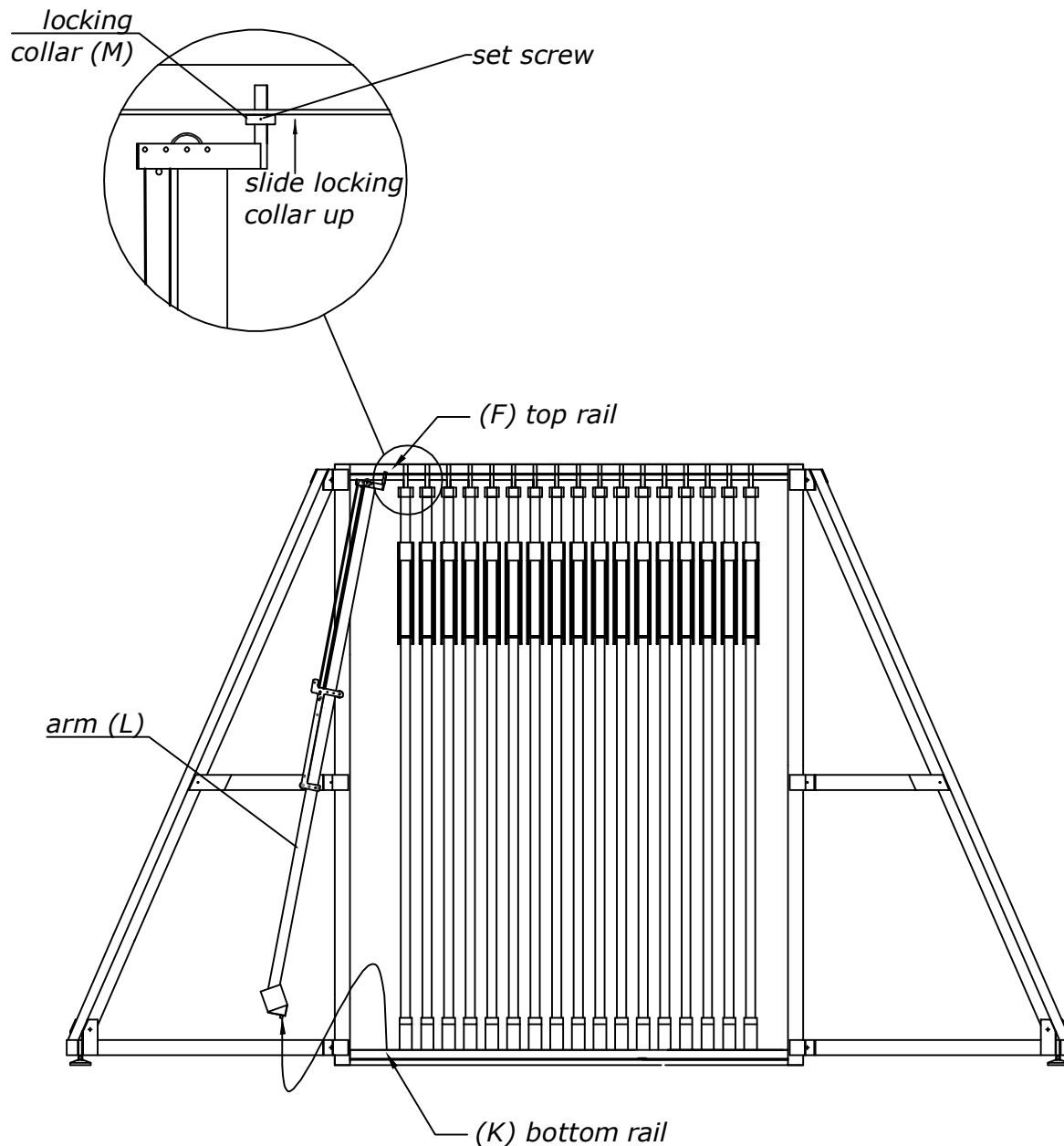




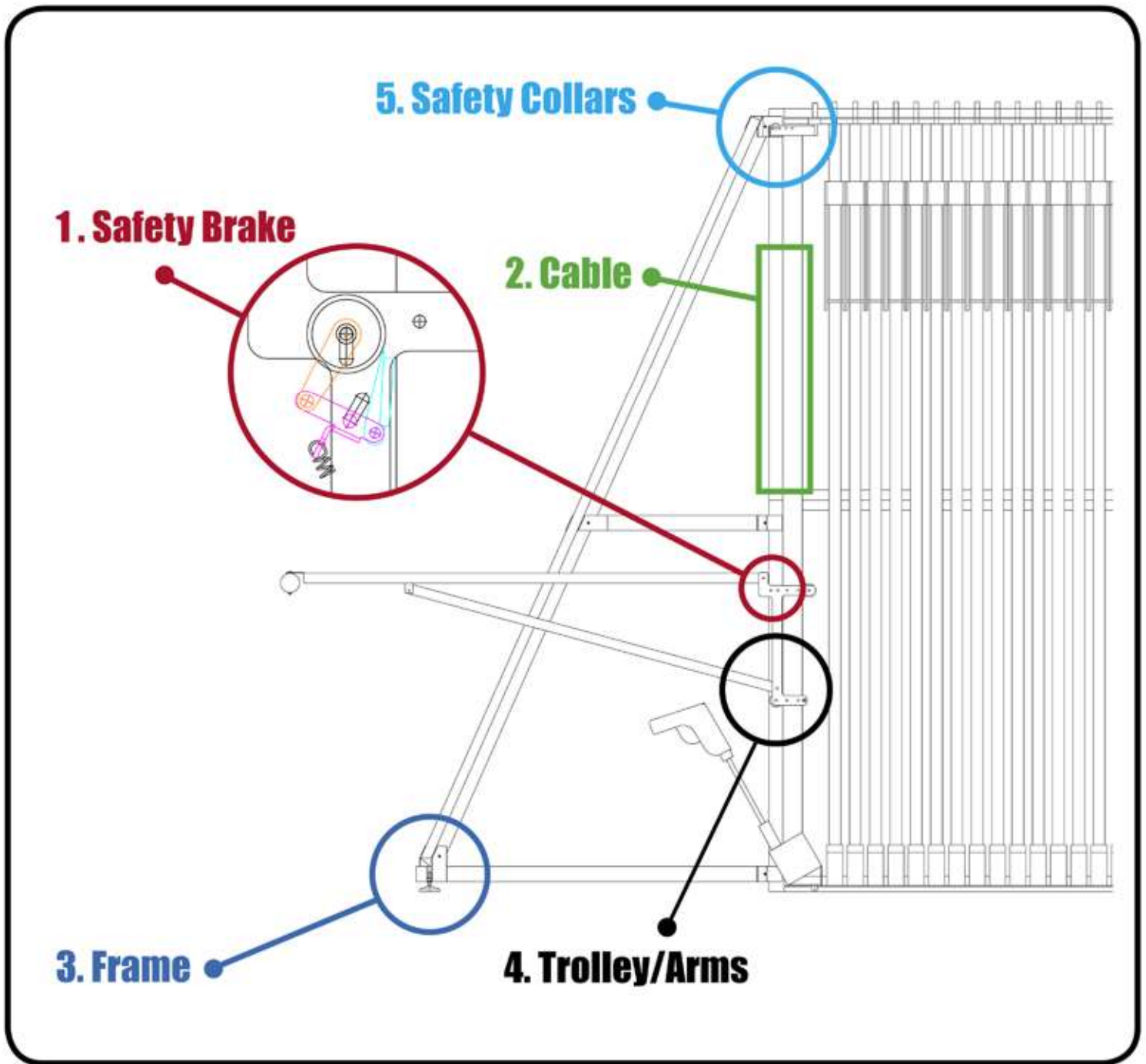
## ERG Cable Replacement Instructions

- 8.1 Prior to inserting arm into display frame check that cable is in the grooves of all the pulleys on the display.
- 8.2 Before inserting arm be sure the (M) Locking Collar is still over the top pin. Take the (L) arm, tilt it slightly and reinsert the top pin into the hole of the (F) Top Arm Rail, next reinsert the bottom pin into the hole in the (K) Bottom Arm Rail.
- 8.3 Snug (M) Locking Collar up against (F) Top Arm Rail. Tighten (M) Locking Collar set screw with Allan Key.
- 8.4 Reattach (Q) Hanger Arm, check that the Safety Break Mechanism disengages smoothly. If the Safety Brake fails to disengage after reassembly phone: (800) 461-3892.

### Detail 8.1:



# Electric Rug Gallery® Semi-Annual Maintenance Quick Reference and Location Guide



*for inquiries or assistance call 1-800-461-3892*

ITEM	INSPECTION AND CHECKLIST
<b>1 Safety Brake</b>	<ol style="list-style-type: none"> <li>1. Check condition of brake pad on each arm.   <i>Replace pad if ...</i> <ul style="list-style-type: none"> <li>1.1 Torn</li> <li>1.2 Separated from Wedge</li> <li>1.3 Pieces of pad missing</li> </ul>   <i>Contact Galt Display Rack Co. for replacement.</i> <p><b>Do Not Use Arm until Safety Brake components have been replaced!</b></p> </li> <li>2. Thoroughly clean all dust, lint or debris from pad.</li> <li>3. Check condition of linkage, pins, end clips and engagement spring.</li> <li>4. Replace any damaged or missing components.</li> <li>5. Check linkage movements by slowly lifting arm and trolley assembly.</li> </ol>
<b>2 Cable</b>	<ol style="list-style-type: none"> <li>1. Lower each arm to its lowest position.</li> <li>2. Inspect the entire length of cable.   <i>Replace cable if ...</i> <ul style="list-style-type: none"> <li>2.1 Kinked</li> <li>2.2 Broken surface strands of wire</li> <li>2.3 Open strands of cable</li> </ul> <p><b>Do Not Use Arm Until Cable Has Been Replaced!</b></p> </li> </ol>
<b>3 Frame</b>	<ol style="list-style-type: none"> <li>1. Check all assembly bolts to ensure they are tight.</li> <li>2. Re-tighten any bolts found loose.</li> <li>3. Check anchor bolts in floor and tighten any loose anchor bolts.</li> </ol>
<b>4 Trolley/Arms</b>	<ol style="list-style-type: none"> <li>1. Inspect bolts and components on each trolley and arm assembly.</li> <li>2. Check for loose bolts or missing components.</li> <li>3. Tighten any bolts found loose and replace any missing components.</li> <li>4. Refer to parts list and contact Galt Display.</li> </ol>
<b>5 Safety Collars</b>	<ol style="list-style-type: none"> <li>1. Check locking collars are in place and set screws are tight.</li> <li>2. Tighten loose set screws and replace any missing collars.</li> </ol>

Failure to properly service and maintain your Electric Rug Gallery® on a regular basis will result in premature failure of the rack and/or component parts. Such failure could lead to injury to your employees or customers and/or damage to property.

**SERVICE CONTRACTS** are available for your Electric Rug Gallery®. For more information on these service contracts, please contact Galt Display Rack at 800-461-3892.

for inquiries or assistance call:

# 1.800.461.3892