



Galt Display Rack
141 SAVAGE DRIVE
CAMBRIDGE, ON CANADA N1T 1S5
TEL: 519-623-0430 / FAX: 519-623-4638
1-800-461-3892 (CANADA & US)
e-mail: info@galtdisplayrack.com
website: www.galtdisplayrack.com

Trolley Bracket Replace Instructions Electric Rug Gallery

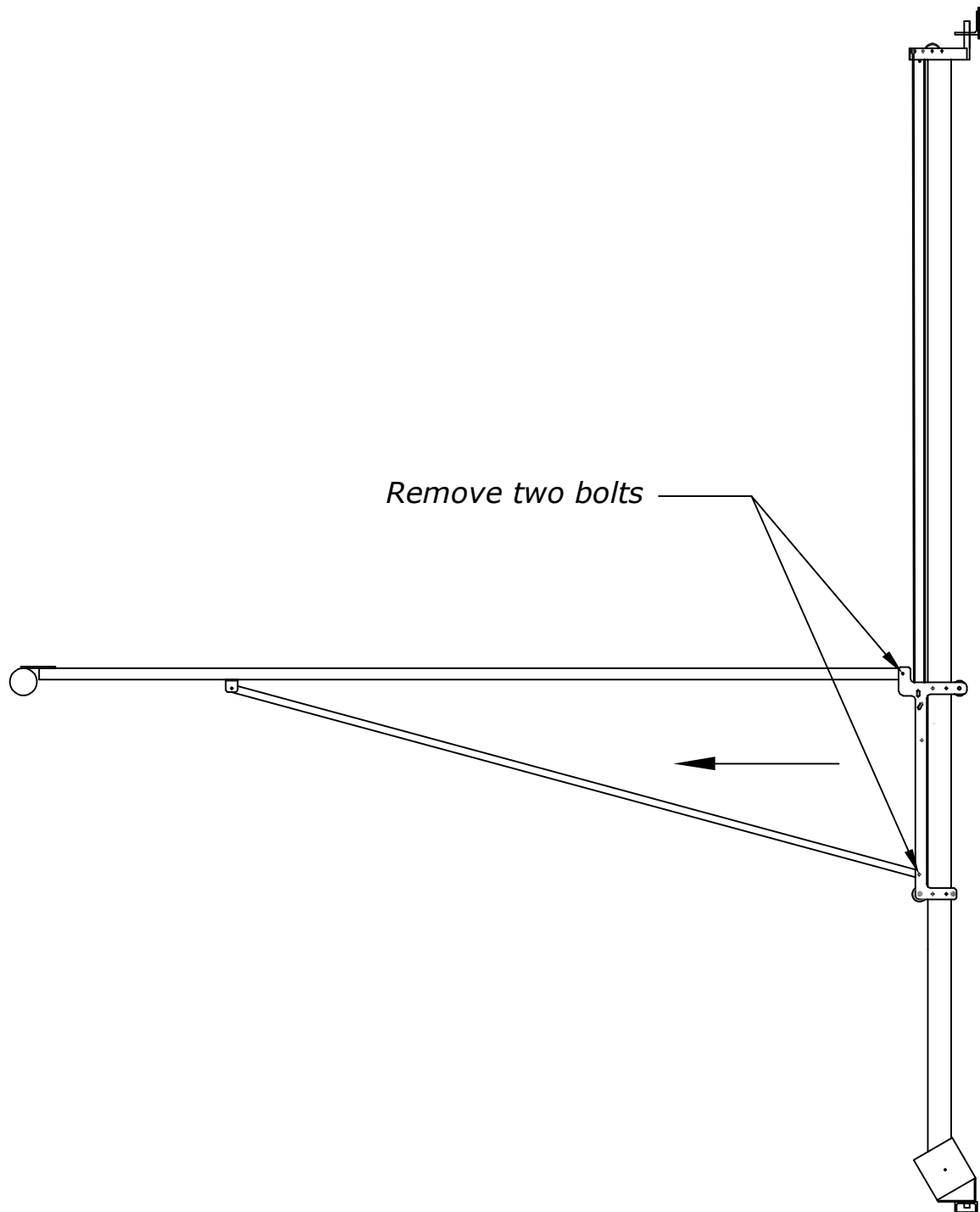
Caution: Care must be taken when performing these procedures as the cable and gear members can cause personal injury in the event of any movement of pieces.

Ensure that the display is not activated using normal lockout procedures and the damaged arm is separated from the others and cannot move up or down during the procedure.

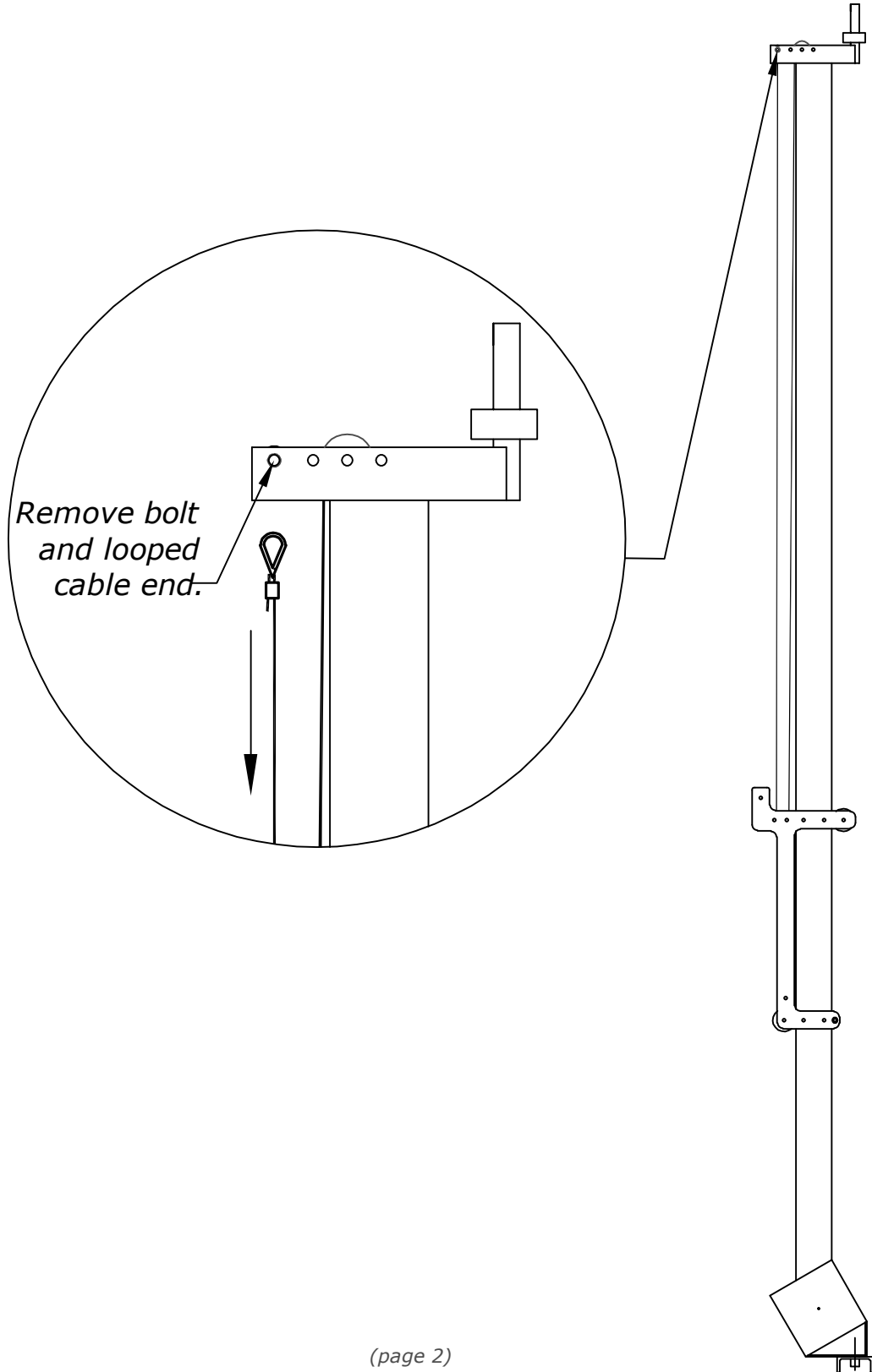
Tools Required

- two $\frac{1}{2}$ " wrenches
- ladder

1.1 Remove the two display arm mounting bolts with two 1/2" wrenches or a 1/2" socket drive and wrench combo. Remove the arm and place it out of the way.

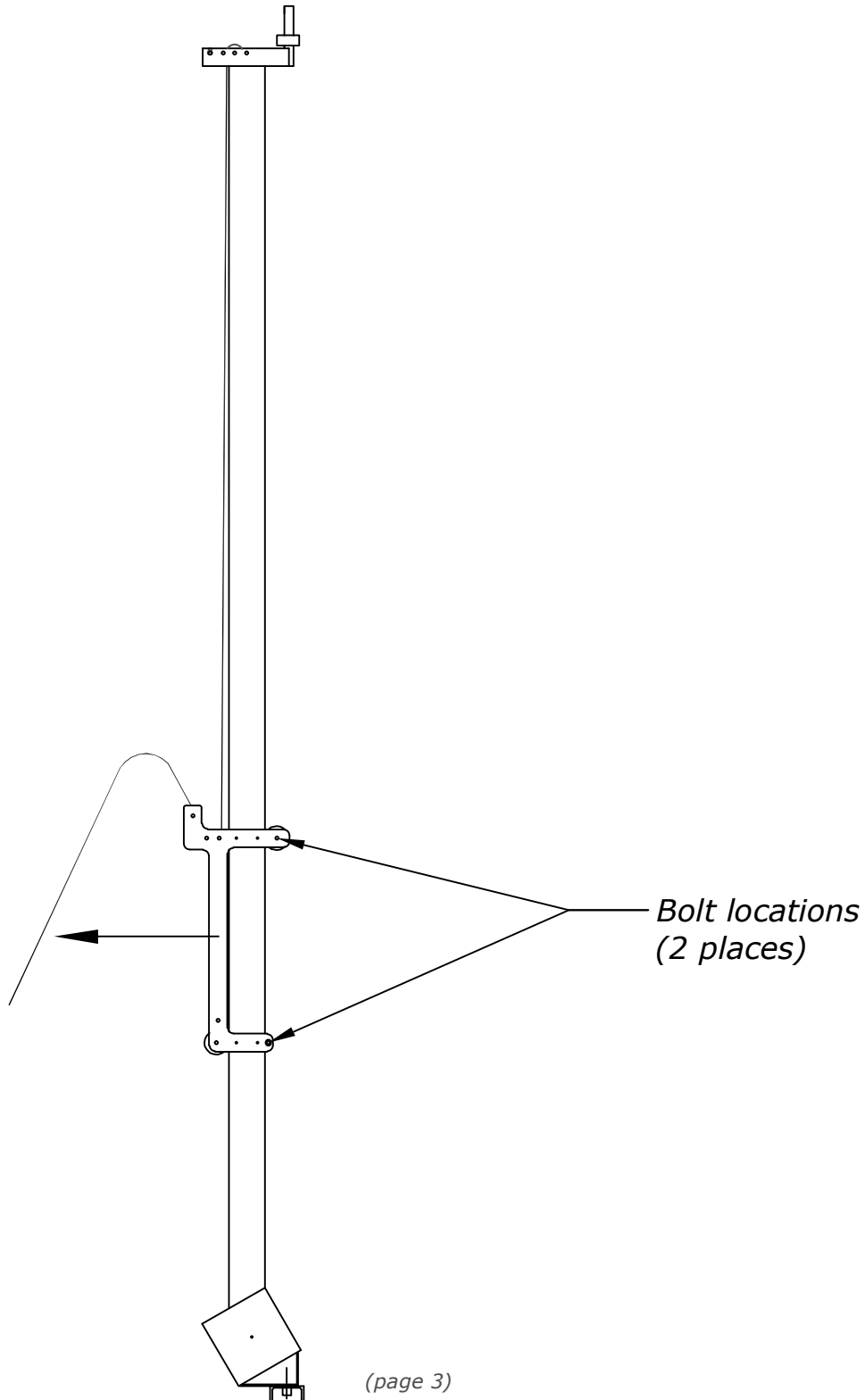


- 2.1 Use a ladder to gain access to the top of the display.
Remove bolt connecting looped wire end to display arm.
Make sure to save all components for use with the new trolley.



3.1 Remove 5/16" bolts and nuts from back of trolley bracket. Once again, save the parts and keep them readily available. The trolley bracket is now ready for removal.

Note: When removing the cable from the bracket, observe it's routing (what it passes over/under). This will make installation easier.



- 4.1 Slide new trolley bracket over arm with brake pad lifted up.
(See Figure 1-1) Assemble lower bracket components.
You can refer to the adjacent arm to see configuration of parts.
Only bolt the lower section of the trolley bracket at this step.

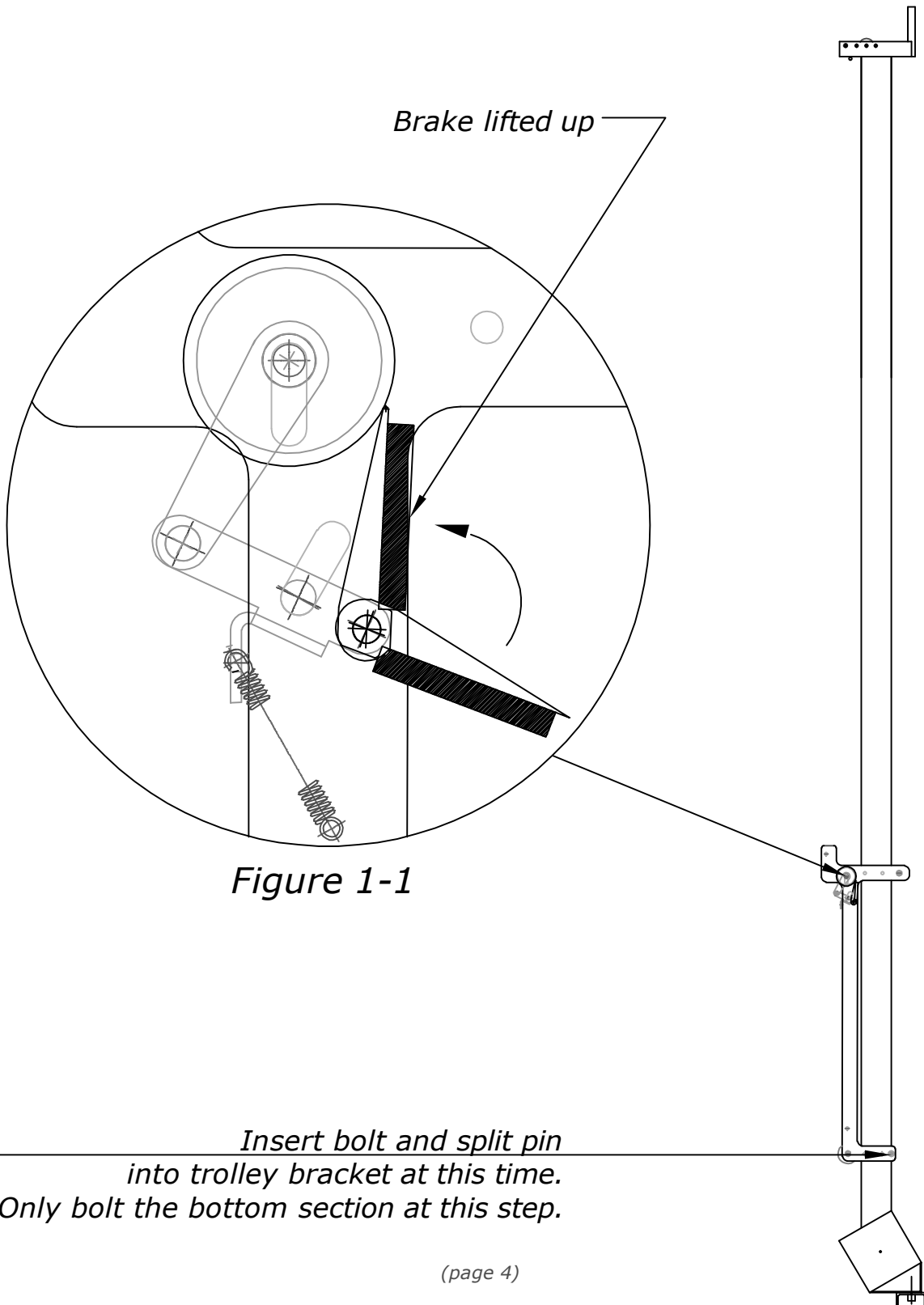
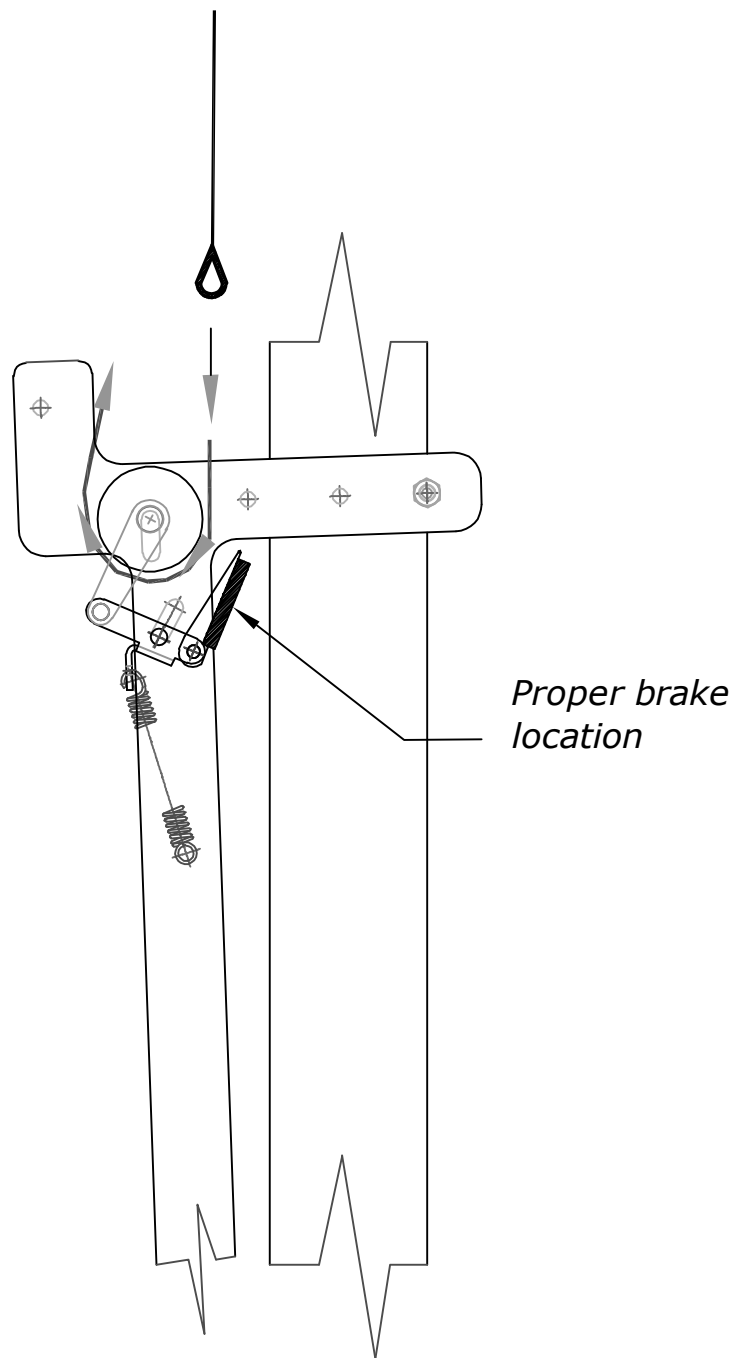


Figure 1-1

*Insert bolt and split pin
into trolley bracket at this time.
Only bolt the bottom section at this step.*

5.1 Pass cables looped end between pulley and brake. Check position of brake to make sure that it has not fallen down. Brake rubber pad must be up and against tube. Inspect brake pad for wear or damage, replace pad and do not use the display arm until repaired.



6.1 Insert black wheel with center bushing into new trolley bracket.
Once again, check position of brake pad before tightening.
You may have to release the brake in order to insert bolt.
(See Figure 1-2)

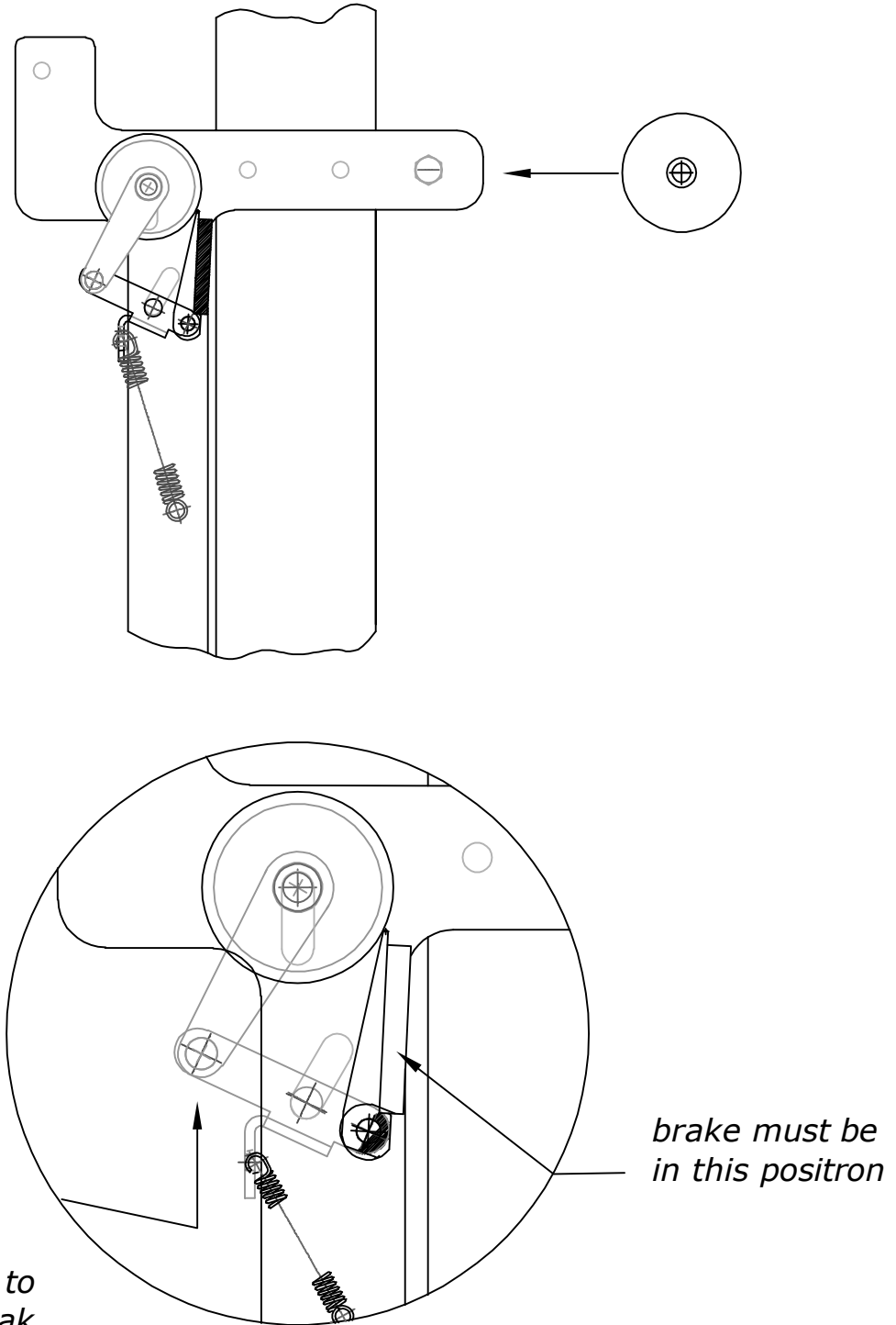


Figure 1-2

7.1 When re-attaching cable, locate crimped end facing out from arm. This is important because if not done, the cable could damage the pulley. (See Figure 1-3)

The remainder of the arm is now ready for assembly and the display is ready for use. Make sure to check that all fasteners are tight and that the cable is positioned in the grooves of both the top and bottom pulleys.
Test brake to insure it engages.

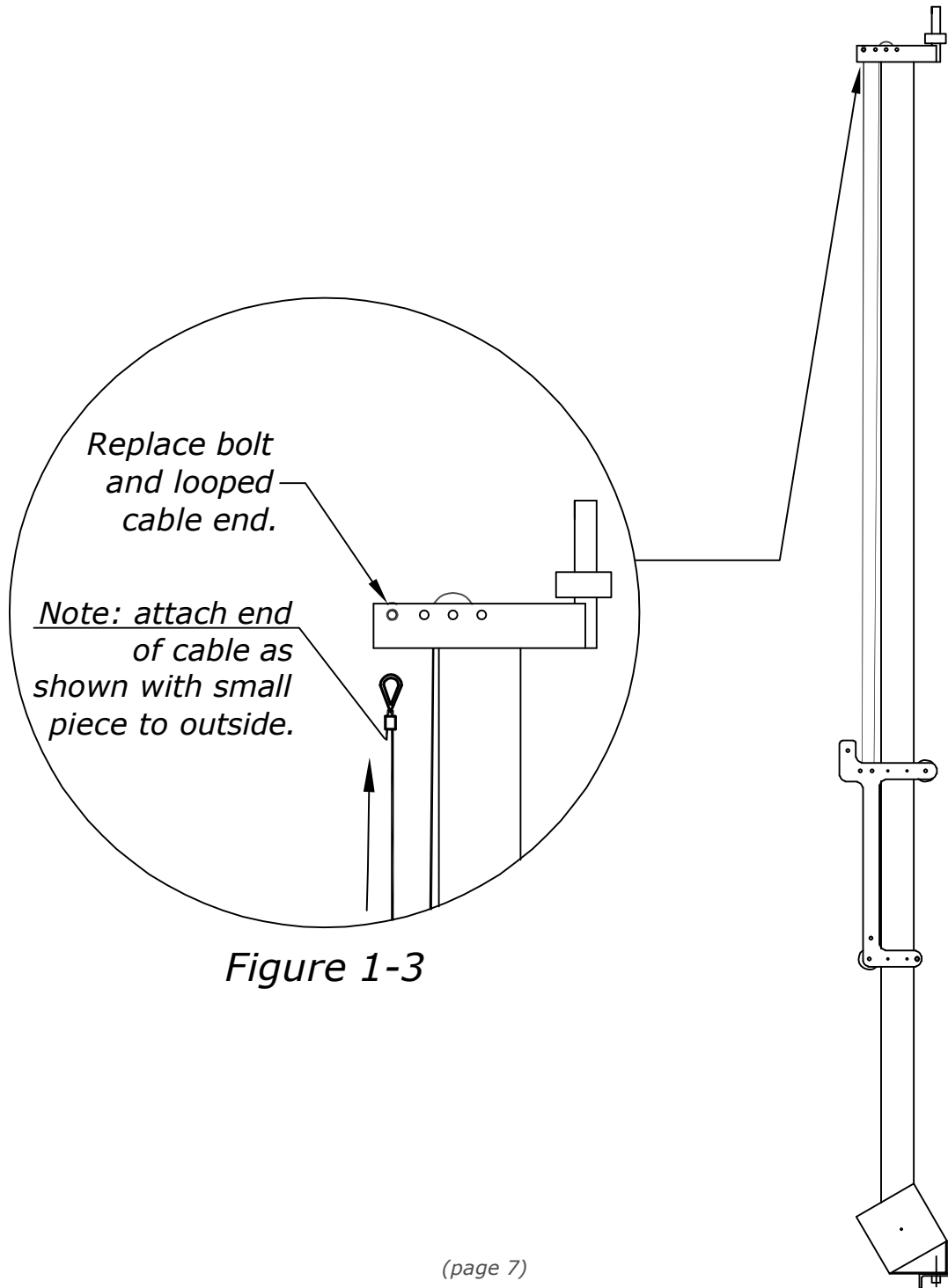


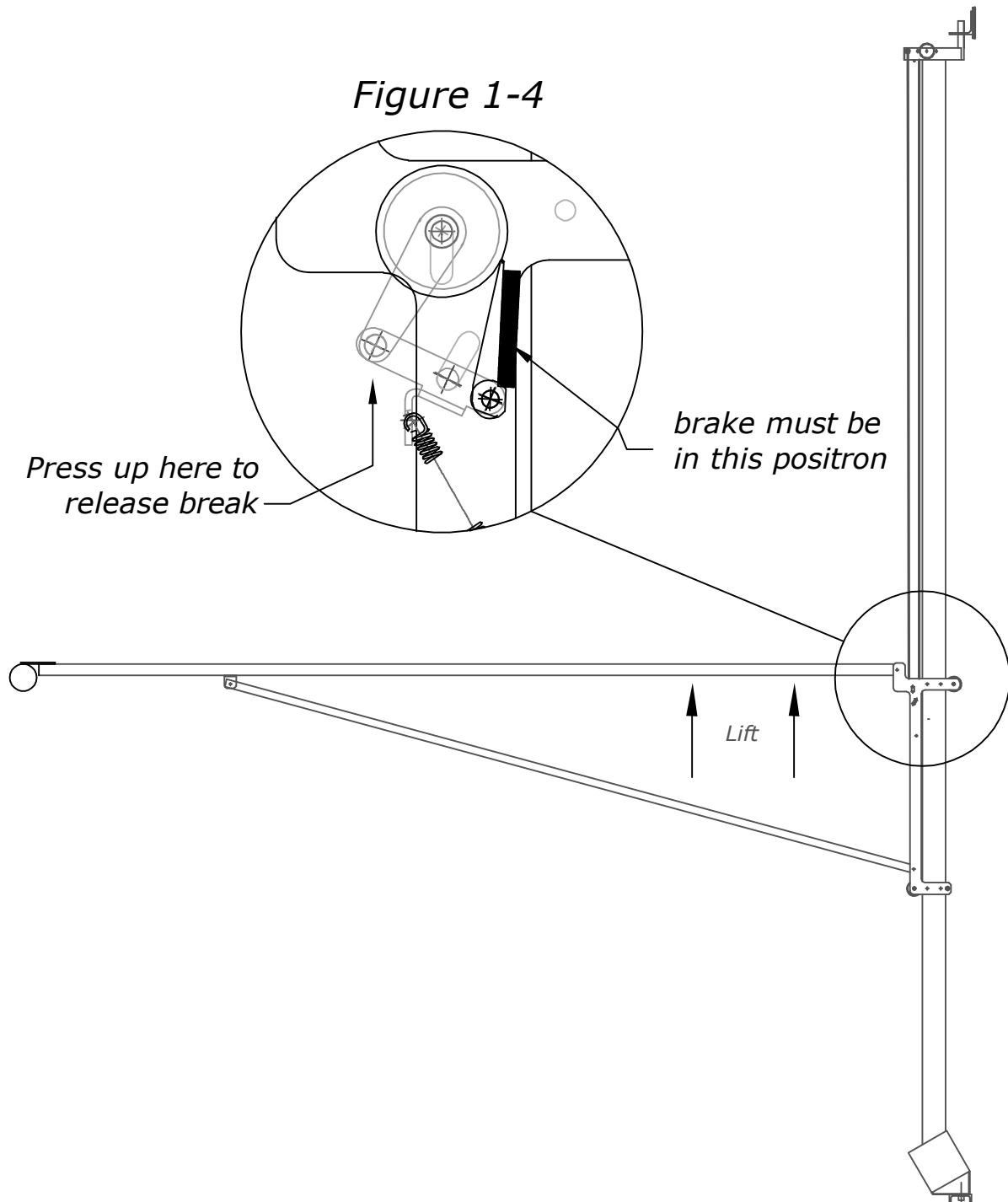
Figure 1-3

~Testing of Bracket Brake Pad~

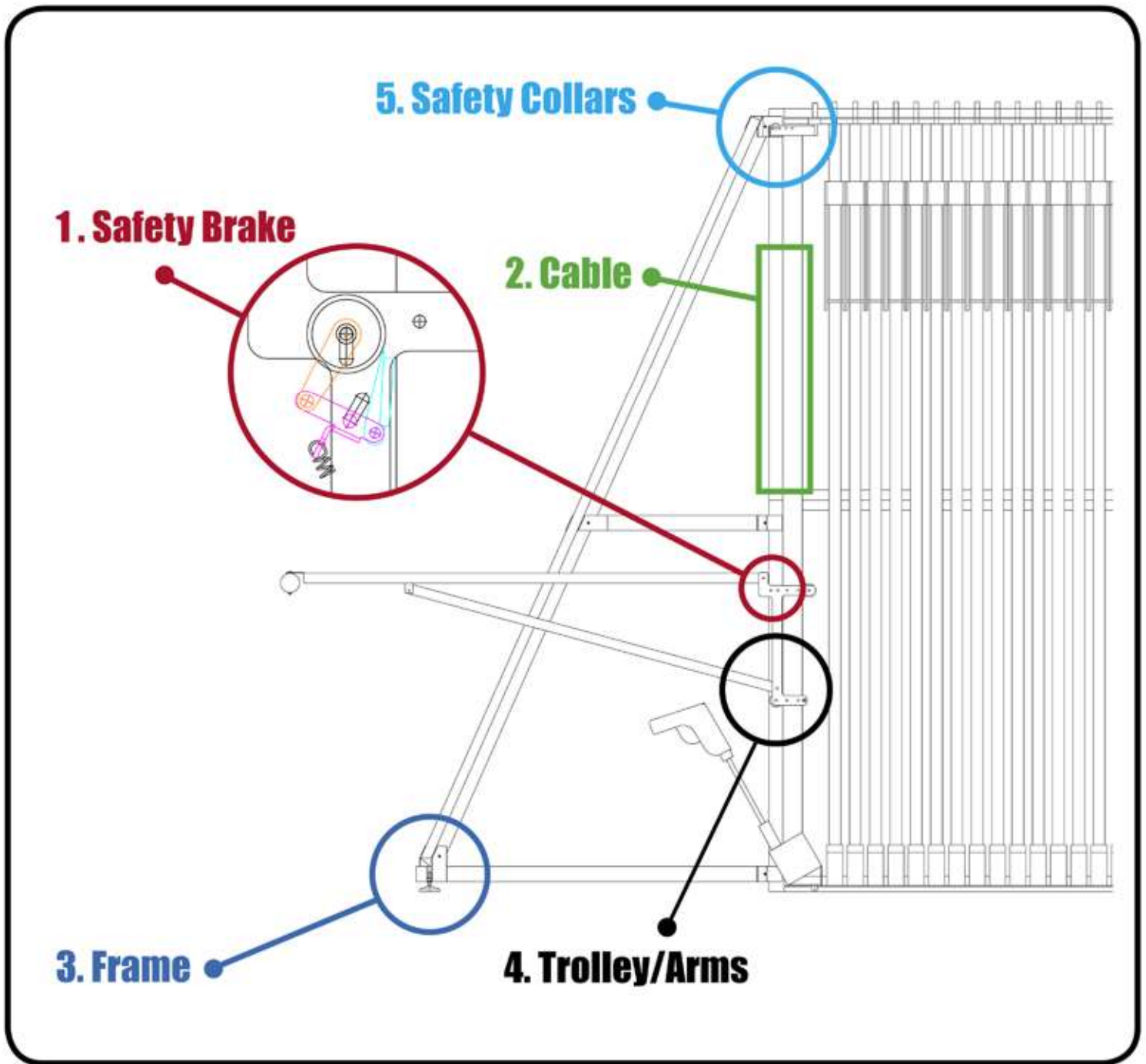
- 8.1 Lift on carpet arm to move trolley bracket up releasing tension on cable, cable tension holds the brake in the released position. Allow arm to come back down slowly and watch to see that brake tries to engage. Apply moderate pressure down on arm to ensure full contact of brake pad.

Again lift arm 2 to 4 inches and allow brake to engage again.

To Release Safety Brake: Push up on safety brake link assembly and slide trolley bracket down to remove slack in cable. Ensure cable is in pulley center groove. Visually check safety brake "C-clips" are in place. (see figure 1-4)



Electric Rug Gallery® Semi-Annual Maintenance Quick Reference and Location Guide



for inquiries or assistance call 1-800-461-3892

ITEM	INSPECTION AND CHECKLIST
1 Safety Brake	<ol style="list-style-type: none"> 1. Check condition of brake pad on each arm. <i>Replace pad if ...</i> <ul style="list-style-type: none"> 1.1 Torn 1.2 Separated from Wedge 1.3 Pieces of pad missing <i>Contact Galt Display Rack Co. for replacement.</i> <p>Do Not Use Arm until Safety Brake components have been replaced!</p> 2. Thoroughly clean all dust, lint or debris from pad. 3. Check condition of linkage, pins, end clips and engagement spring. 4. Replace any damaged or missing components. 5. Check linkage movements by slowly lifting arm and trolley assembly.
2 Cable	<ol style="list-style-type: none"> 1. Lower each arm to its lowest position. 2. Inspect the entire length of cable. <i>Replace cable if ...</i> <ul style="list-style-type: none"> 2.1 Kinked 2.2 Broken surface strands of wire 2.3 Open strands of cable <p>Do Not Use Arm Until Cable Has Been Replaced!</p>
3 Frame	<ol style="list-style-type: none"> 1. Check all assembly bolts to ensure they are tight. 2. Re-tighten any bolts found loose. 3. Check anchor bolts in floor and tighten any loose anchor bolts.
4 Trolley/Arms	<ol style="list-style-type: none"> 1. Inspect bolts and components on each trolley and arm assembly. 2. Check for loose bolts or missing components. 3. Tighten any bolts found loose and replace any missing components. 4. Refer to parts list and contact Galt Display.
5 Safety Collars	<ol style="list-style-type: none"> 1. Check locking collars are in place and set screws are tight. 2. Tighten loose set screws and replace any missing collars.

Failure to properly service and maintain your Electric Rug Gallery® on a regular basis will result in premature failure of the rack and/or component parts. Such failure could lead to injury to your employees or customers and/or damage to property.

SERVICE CONTRACTS are available for your Electric Rug Gallery®. For more information on these service contracts, please contact Galt Display Rack at 800-461-3892.

for inquiries or assistance call:

1.800.461.3892